

If you get Stay signed in when signing into Microsoft

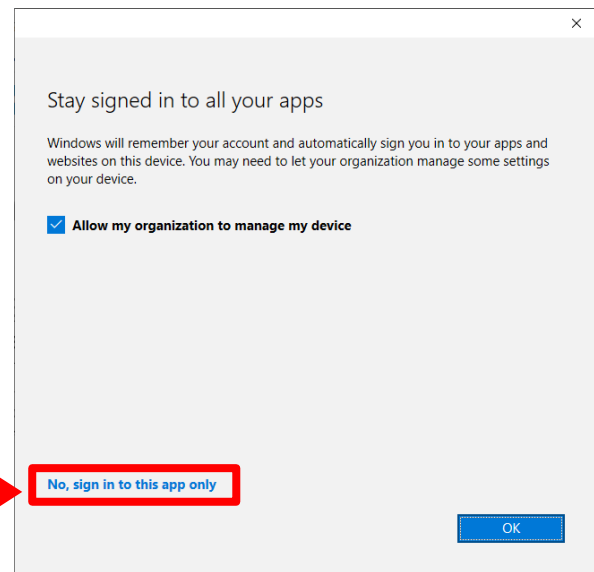
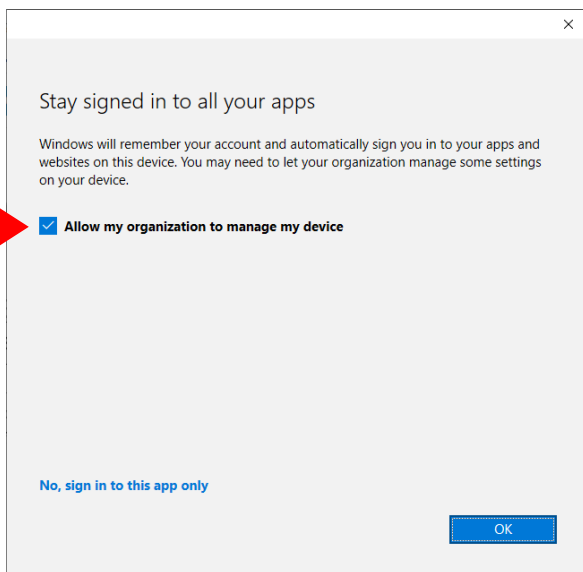
**IF the device WAS issued by
Open Access College**

CHECK/TICK THE BOX

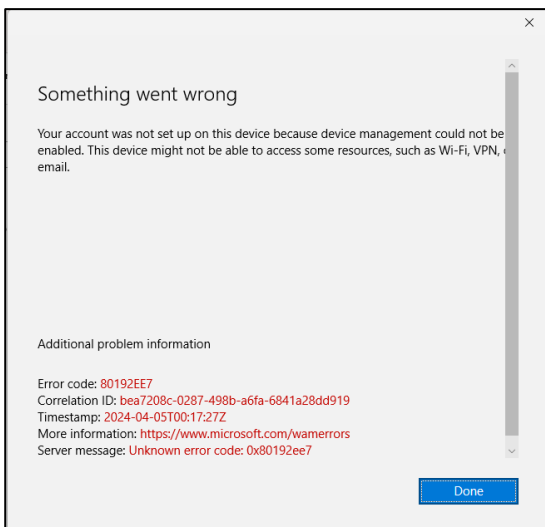
Allow my organization to manage my device then click on the OK button

**IF the device WASN'T issued by
Open Access College**

No, sign in to this app only



If you get Something went wrong...



NOTE: If you don't uncheck/tick the box, you may get an MDM error. This is because BYOD devices aren't supported by device management. This error is OK if encountered